



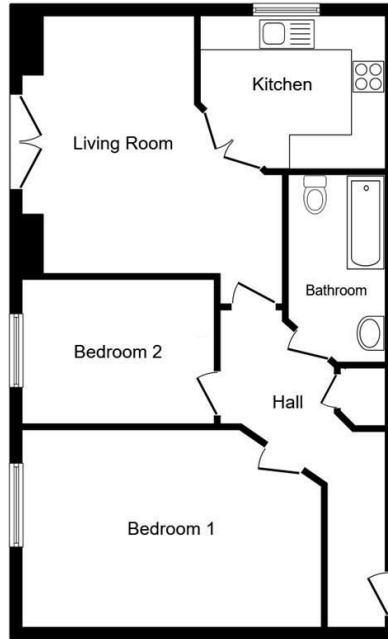
**5 Elderberry Close, Thorpe Hesley, Rotherham, South Yorkshire, S61 2NZ**

**Asking Price £130,000**

Situated on this most desirable estate is this ground floor two bedroom apartment which offers the opportunity to live in one of the most demanded areas of Rotherham. With gas central heating, UPVC double glazing, security intercom, one allocated parking space and kitchen with integrated appliances.



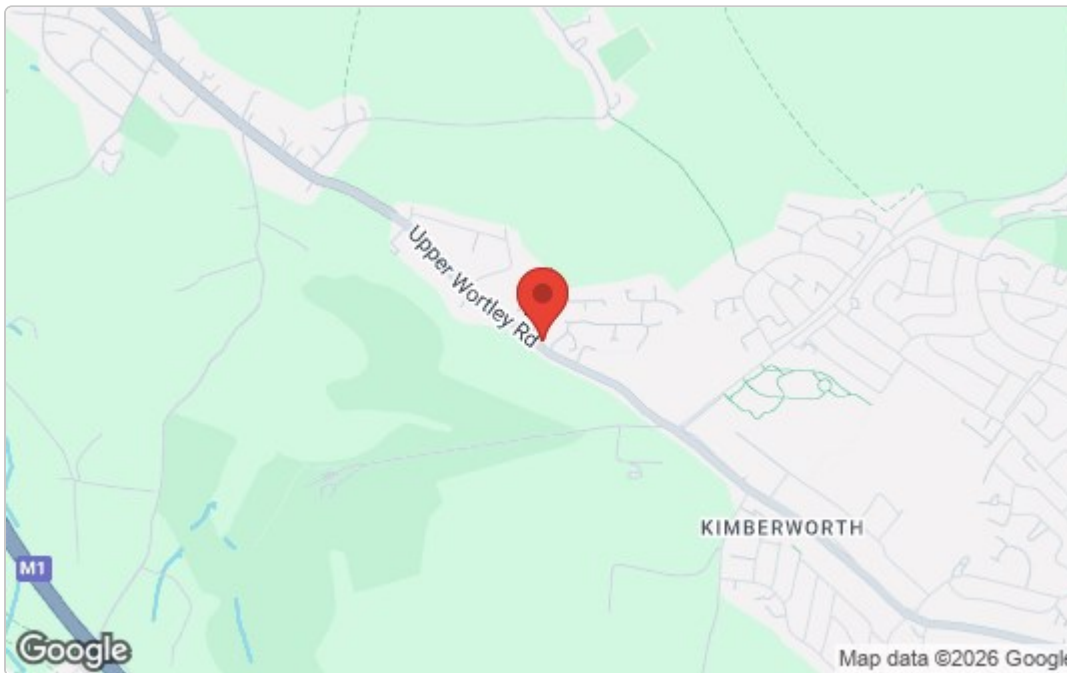
# Floor Plan



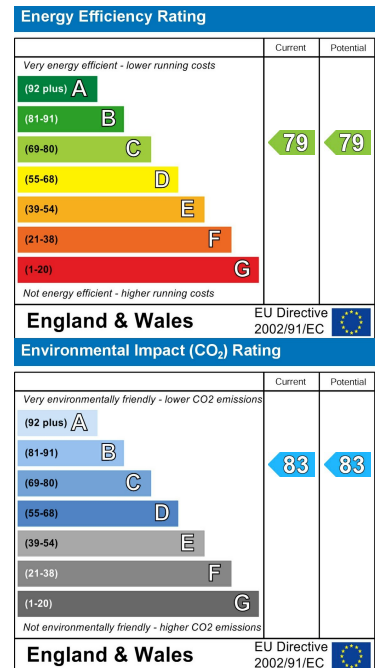
Floor Plan

This floor plan is for illustrative purposes only. It is not drawn to scale. Any measurements, floor areas (including any total floor area), openings and orientations are approximate. No details are guaranteed, they cannot be relied upon for any purpose and do not form any part of any agreement. No liability is taken for any error, omission or misstatement. A party must rely upon its own inspection(s). Powered by www.Propertybox.io

# Area Map



# Energy Efficiency Graph



These particulars, whilst believed to be accurate are set out as a general outline only for guidance and do not constitute any part of an offer or contract. Intending purchasers should not rely on them as statements of representation of fact, but must satisfy themselves by inspection or otherwise as to their accuracy. No person in this firm's employment has the authority to make or give any representation or warranty in respect of the property.

**www.merryweathers.co.uk**

**Merryweathers (Rotherham) Limited** 14-16 Ship Hill, Rotherham, S60 2HG

**Tel: 01709 375591** E-mail: residential@merryweathers.co.uk

**Offices also at: Barnsley & Mexborough**

Registered Office: 14-16 Ship Hill, Rotherham, S60 2HG  
Registered in England and Wales No. 6679044

